

Community

Frances was also very involved with the Naugatuck Valley community. As President of the Women's Club of Ansonia, Derby, and Shelton, she invited many famous artists and celebrities, including aviatrix Amelia Earhart and African American composer Henry Burleigh, to present at the Sterling Opera House in Derby. She founded the Derby Choral Club and hired Horatio Parker, dean of Yale School of Music, to direct the club. She was also a Trustee of Griffin Hospital, a member of the Board of Directors of Birmingham National Bank (now the site of Twisted Vine Restaurant in Derby), and President of the Board of Directors of Derby Neck Library which her father established in 1897.



Derby Neck Library

Environment

Frances believed in protecting and preserving land for future generations. She was the first female Vice President of Connecticut Forest and Parks Association and presided on the board when Gillette Castle was acquired and became a state park.

On top of all her accomplishments, her lasting contribution was deeding her 350+ acre farm to the State of Connecticut. Due to her generosity and foresight, visitors can enjoy the trails and scenery at Osbornedale State Park and attend guided tours and programs at the Osborne Homestead Museum and the Kellogg Environmental Center.

Come visit today!



Osborne Homestead Museum

500 Hawthorne Ave
Derby, CT 06418

www.ct.gov/deep/kellogg
Phone: 203-734-2513
Fax: 860-622-2648



Osborne Homestead Museum



*Learn about the Lady of
Derby, Frances Osborne
Kellogg*



Frances Osborne Kellogg was born on May 11, 1876 to Major Wilbur Osborne and Ellen Davis. She lived to be 80 years old and spent her entire life at her home, now the Osborne Homestead Museum located in Derby, CT.

She was a woman ahead of her time—a successful dairy breeder, community leader, conservationist, and prosperous business woman who took over the family's companies at the time when women did not have the right to vote.



Osborne Homestead Museum

Manufacturing

When her father died in 1907, the family lawyer advised Frances, age 31, to sell her father's businesses to provide a comfortable living for her and her mother. Frances refused this advice and continued to run the family businesses.

Her titles and businesses include:

- ◆ President of Union Fabric Company in Derby, manufacturers of covered wire, including corset and hat wires.
- ◆ Vice President of Connecticut Clasp Company of Bridgeport, manufacturers of garment clasps.
- ◆ Treasurer of F. Kelly in Derby, manufacturers of paper fasteners, hose supporters and corset & suspender trimmings.
- ◆ Co-Founder of Steels & Busks, Ltd of England, manufacturers of corset springs and supports.



Union Fabric Company and F. Kelly are the present location of Roosevelt Towers on Rte. 34 of Derby, CT.

Agriculture

In 1919 Frances married Waldo Kellogg, and the couple made Osbornedale Farm famous for its Holstein-Friesian cattle which broke

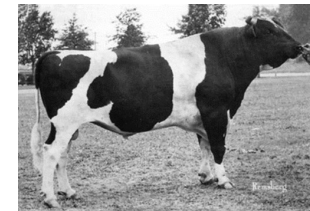


Waldo S. Kellogg

records in milk production, butterfat, and milkfat. After the untimely death of her husband in 1928, Frances continued running the farm and bred one of the most influential bulls in Holstein history. His name was Ivanhoe and his bloodline continues to run through a percentage of the milk we drink today.

In some dairy publications she is listed in the Top Ten Dairy Breeders of all time. Below are her distinguished titles in the dairy industry.

- ◆ President of the American Holstein-Friesian Association
- ◆ President of the Connecticut Holstein-Friesian Association
- ◆ Director of the Connecticut Jersey Cattle Club
- ◆ Director of the National Dairy Show
- ◆ Director of the New Haven County Farm Bureau



Ivanhoe